



# Good Shepherd Lutheran Church

## October 2011 Newsletter

---

We shall KNOW Jesus as our Lord, GROW in our faith and SHOW Christ's love to our world.

---

1215 McKercher Drive • Saskatoon, SK • S7H 5L9 • (306) 477-1313 • Email: [goodshep@shawbiz.ca](mailto:goodshep@shawbiz.ca)  
Pastor Harley Johnson ([goodshep.lead@shawbiz.ca](mailto:goodshep.lead@shawbiz.ca))  
Music Director: Anna Scott • Office Coordinator: Emily Fornwald  
[www.goodshepherd.shawbiz.ca](http://www.goodshepherd.shawbiz.ca)

---

## Word of Witness

October 2011

### Psalm 119: 72

72 The law that you gave means more to me than all the money in the world.

“Lord You Are More Precious Than Silver”

Lord You are  
More precious than silver  
Lord You are  
More costly than gold  
Lord You are  
More beautiful than diamonds  
And nothing I desire  
Compares with You

The Old Testament writer speaks of a law which literally translates, “Torah” or “teaching”. For ancient believers, the gift of God’s teaching and wisdom was the greatest value in life. Life without God was senseless—with God, all life had significance.

This month, our Worship themes focus on the importance of the Bible. For Christians particularly, but for people of many traditions, the value of the truth contained in scripture is amazing. People are still realizing the principles within scripture are universal and life-giving.

Not everyone accepts the full revelation that Jesus was the Son of God, but even skeptics of faith realize the enormous power of Jesus’ message of love.

Our Lutheran heritage places the Holy Bible as our source and “norm” of teaching. Scripture is supported through creeds, confessions and catechism. Throughout the Bible, there is a consistent image of scripture being the “Living Word.” This theme underlines that God still speaks and unfolds truth to every generation.

The ancients had a heartfelt desire to have God’s wisdom speak to their hearts and minds. May we grow in this pursuit for our lives as well.

Comparing the Word of God’s mouth to thousands of gold and silver pieces is one way to show the great value of the Living Word!

While preparing for a message on the joy of generosity, I typed in the statistic that 3/4’s of Jesus’ Parables deal with being stewards. As I reread my research on management, I realized I had inadvertently used the caps for 3/4’s which read: #?\$. Maybe my little slip says more about our perspective on stewardship than I could have planned!

Yes, we number and question the dollars we have—the dollars to retire, to save, spend, to invent, to donate.

Coincidence or Providence? I continue to believe that God’s spirit speaks & prompts us to new revelation whenever we are open to the “Living Word”

May our perspective of scripture affirm our vitality as People of Faith and Hope. This affirmation is worth more than silver or gold. The priceless assurance is that we are loved by a God of Abundance, not of scarcity.

We have an excessively generous creator, who died not counting the cost, but gave his very life so that all may believe and live in His Kingdom of Providence and Grace!

Blessings abound,  
Pastor Harley Johnson

# Good Shepherd News

---

## Worship Roles

**Thanks for all the assistance with worship components, ushers, greeters, Holy Communion assistants, etc. Please give Susan Miller a call if you can help or sign up on the bulletin board beside the kitchen!**

---

## Upcoming Events

- **October 2<sup>nd</sup> is Campus Ministry Sunday.** Your gift of one loonie or toonie (or a \$10 or a \$20) for each member of your family will go to support the work of Lutheran Campus Ministry. If you know of anyone attending the Universities of Regina or Saskatchewan, please encourage them to drop in and say hello to Pastor Cheryl (Regina) or Pastor Paul (Saskatoon). They'll be glad they did! Please put all donations in the jar provided.
  - The **Lutheran Care Society** invites you to an evening Hymn Sing of Praise & Thanksgiving on Sunday, October 23 - 7:00 p.m. at Faith Lutheran Church, 2801 Preston Avenue. Enjoy your favorite hymns, Gospel music, fellowship and refreshments. Freewill offering. Look forward to seeing you there!.
    - The **Lutheran Care Society** is hosting a Christian Estate and Will Planning Seminar at Resurrection Lutheran Church on Saturday, October 15, 2011 – 9:30 a.m. – 3:00 p.m. Guest speaker is Allan Schellenberg, MBA, Executive Director of Lutheran Foundation Canada. Please contact Lovina at lwalper@shaw.ca or 306 374-9796 to register, as lunch is provided. There is no registration fee.
  - **A Men's Retreat:** October 21-23 at Arlington Beach. Ali Tote will present on "The Turtle and the Fencepost". For more information, contact Murray Patzwald at (306) 979-8756 or mpatzwald@sasktel.net.
- 

## Announcements

- ❖ The Property Management team would like feedback on the **new sound room layout**. There are copies on the doors to the sanctuary and the bulletin board. Please leave a comment on the picture by October 16<sup>th</sup>.
  - ❖ If you are interested in helping out with Communion preparation, please contact Lorraine Larson, or Emily in the office.
- 

## Blessings!

- **Blessings to Marley Salamon who was baptized on September 11<sup>th</sup>!**
  - **Blessings to Blair and Adrienne Healey on the birth of their son, Jacob Thomas, born September 26<sup>th</sup>!**
  - **Blessings and thanks to Pastor Ali Tote from Resurrection Lutheran Church for preaching on October 2<sup>nd</sup>!**
- 

## Thank You!

- **To Ashlee Bloder and Andy Linsley for painting the church fascia!**

## Happy Birthday!

Happy Birthday to our members born in October:

- Wendy Albertson
- Randi Barker
- Kal Berggren
- Beverley & Connor Brenna
- Esther Chen
- Marcus Chesters
- Lavonne & Lorne Cloke
- Katie Elke
- Martin Erlandson
- Kaelyn Fraser
- Asher Haab



- Janice Janzen
- Doreen McLellan
- Roger Mercier
- Don Meyer
  - Curtis Satre
  - Stefan Scott
- Carolyn & Roland Steober
- Bob Taylor
- Debra & Ryan Tilk
- Gavin Tucker
- Stephanie Tweidt
- Jerry & Doreen Wilde

We want to know when your birthday is!  
Please call the church at 477-1313 to let us know.

---

## Nursery Ministry

Planning is in place to provide a safe and pleasant child-care program, during Worship, beginning this fall!

Please contact Kara Erickson (975-9165) or Nicole Bilinski (244-6803) if you are interested in helping!

### Nursery Ministry Perspective

#### Preliminary Observations

1. There is a need for support for families with young children.
2. Remove disincentives for families with young children.
3. Support single parents/shift workers.

Expressed desire for mothers and father to have occasional "stress free" opportunity to Worship. Can focus on sermon and participate fully in Worship.

4. Want children to grow up interacting with other church family in open environment.
5. Have resources of some space/area unutilized.
6. Current gift of willing, loving people to share in "Child Care/Nursery Ministry".
7. Need to organize and equip a structured, dependable program with flexibility.
8. Not a "day care" but a child care with faith environment, administered by parents and volunteers, staffed by parents, seniors, youth etc.



#### Principles of Nursery

1. Enhance a safe and welcome environment for children and infants under three years of age.

2. Create a program to ensure supervised child care during Worship.
3. Worship will remain open and accepting for children of all ages; nursery is an option for families.
4. Nursery ministry serves families as a "primer" for future Sunday School, Vacation Bible School and congregational fellowship. "Context where children meet new people and new people meet children."
5. Promote program as spiritual care for parents.

#### Supervision/Administration

1. Establish Parental Guidance Team to meet regularly (min. 3-4 members),
2. Nursery Team to report to CMT in liaison with Worship Committee/Evangelism Committee/Property Management/Education Committee/Stewardship Committee.
3. Create and maintain a supervision list for each service for volunteers.
4. Prepare and update a manual of operation including safety and policies for age, numbers, suppliers, snacks, appropriate games, music, toys, cleaning, etc.
5. Question of finances so that "youth" could staff as fundraiser? Ex. Take a month.
6. Create and maintain budget.
7. ELCIC Handbook - Welcome First on Safety

#### Physical Utilization of Space

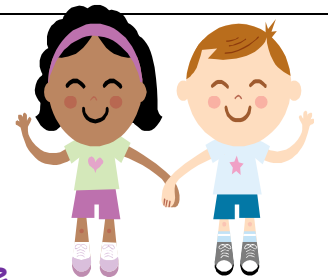
1. Storage of toys/supplies.
2. Create dutch or 1/2 door.
3. Question of TV use.
4. Sound System? Good to have option.
5. Window in east wall for light and ventilation.
6. Volunteer chairs.

#### Other

1. Programs of "Sunday Toys".
2. Support group for parents with young families.
3. Advertise change table area.
4. Need to designate an area for breast feeding for those who desire more quiet space than the sanctuary.
5. Become VERY friendly to family focus.

---

## SUNDAY SCHOOL SCOOP



Thank you to everyone who came out to register for Sunday School at Good Shepherd. As you know, our program has changed and we are excited to keep everyone up to date on what is happening at 9:45 am on Sunday mornings!

**We now have a Hollywood Movie Room so that children can watch the Bible story that we are focusing on (and also munch popcorn!)**

Children will get time at Creation Station where they can use their creativity to make something that reinforces the Bible story of the month.

**The Drama Station is where children act out Bible stories or play games that strengthen what they have learned about God's word.**

## **BIBLE THEMES WE ARE STUDYING**

**Sept. 18, 25 and Oct. 2 - The Good Samaritan**

**Oct. 16, 23, 30 - Jesus Calms the Storm**

**No Sunday School on October 9**

---

### **From the Youth Intel:**

- Many thanks to Emily Fornwald and Marty Willick for setting up the youth account and generally being excellent support to the youth!
- Regular Youth Nights Sunday evening @ 7:00 ages 12-17. All Welcome, Bring your friends!
- No Youth on Oct. 9th, due to Thanksgiving weekend
- Oct. 16th Nerf Scrimmage @ Good Shep with St. Andrews' Presbyterian Youth Group
- Any youth interested in Volunteering for the Nursery Program on Sundays, speak to any of your leaders about your availability and we will inform Kara; duties include playing and taking care of the young ones in the nursery during Sunday services
- We are also creating a Youth web page on the church website, so if you are interested in learning some new skills and take part in creating the site, let us know ASAP! No experience required
- To hear about upcoming events: Join the Facebook Group! *Good Shepherd Lutheran Church Youth Group* or if you are not on the emailing list, let us know and/or send a message to [redhead\\_140@hotmail.com](mailto:redhead_140@hotmail.com)

*God's peace,*  
Ashlee Bloder Kurt Bergsma Andrew Linsley

"The fruit of the Spirit is love, joy, peace, patience, kindness, goodness, faithfulness, gentleness and self-control." Galatians 5:22-23a

---

# Music Ministry

## Good Shepherd Choir-

The Choir will be singing on October 9<sup>th</sup> for the Thanksgiving service!

Choir rehearsals are Wednesday evenings from 7-8pm beginning Sept. 14th. See you there!

**Musicians-** Do you have musical talents you are willing to share? If you would like to be part of a worship band, or contribute musically to the worship services in any way- please contact Anna Scott the Music Coordinator by leaving a message at the church **477-1313** or e-mailing **loudbananna@hotmail.com**.



**Song Requests-** Do you have a favorite hymn or meaningful worship song you would like to sing at church? Please let Anna Scott know- or write it on the Song Request sheet on the bulletin board in the front entry.

---



I wish to express my thanks to those who attended our recent Stephen Ministry information night and expressed interest in the program. Unfortunately, timing of the sessions did not work out for those in attendance at this time. It also doesn't work for other potential candidates.

I personally have a deep commitment to this ministry, so it saddens me to say that I am disappointed and discouraged with the lack of candidate ministers. If anyone has suggestions on how to better implement this program, I am open to hearing them. I will also attempt putting together a training class again in the Spring.

This is such a vital and important ministry. More and more, we hear from the elderly, the shut-ins, and those grieving that they just want someone to talk to. Stephen Ministers are caring, compassionate, listening, Christian caregivers. They provide a valuable ministry and are rewarded **seventy times seven and more in return!**

Your servant in Christ,  
Fran Seidler

---

# Financial Notes

For the past three Sundays the theme at Good Shepherd has been “Blessed to be a Blessing”. There are many members and friends of this congregation who put this into action so quietly and effectively. Sharing the blessings of their gifts and financial resources to deliver the programs and activities, worship and music, behind the scene planning and implementation of administrative and maintenance requirements all come together to provide the congregation a sense of well-being.

This sense of well-being could also settle over us like a cozy wrap on a cool day when we look at Good Shepherd's finances. We are fortunate to not require the use of a “line-of-credit” as we go into the last quarter of the fiscal year. We actually have \$3,500 in our operating account as of the middle of September. Hopefully this trend can continue so that the desperate push for extra funds at the end of the year is not required.

However, several items have been identified that will require attention over the next few months. These are outside the regular operating budget and we are asking members of the congregation to consider contributing to the “Celebration Fund” to help cover the cost of the projects. As our facility ages and needs change, funding is required to address the needs as they arise. Thirteen items were identified in last month's newsletter. Plans, costs and priorities are being finalized on this list so that as funds become available, the projects are ready to be done.

Please be an active participant in a community of “blessing” as gifts are shared to enhance our ability to be a blessing among those we serve.

Your servant in Christ,  
Joan Meyer, Treasurer

## PAR: Pre Authorized Remittance

- What is PAR?** It is a method of direct debit donation to the church on a monthly basis.
- Why do it?** PAR allows us to formalize our commitment to make God first in our lives and to assist Good Shepherd's Church Management Team in maintaining programming throughout the year.
- How do I do it?** Simply fill out the form available in the office, attach a blank cheque marked VOID and hand it in to the church office. Your donation will be deducted on the 20<sup>th</sup> of the month.
- Are there limits?** There are no limits. One can give a portion of their commitment through PAR or use PAR as the sole contribution means for GS.

**What if I want to change or cancel my PAR?**

Just call the church office to pick up a change PAR form.  
Changes are effective immediately.

**Thank you for your support of Good Shepherd!**



Sunday	Monday	Tuesday	Wednesday	Thursday	Friday	Saturday
						1
					Office hr 9am-12pm	Confirmation at LCBI
2	3	4	5	6	7	8
Worship 9:45 & 11:15 (Sunday School @ 9:45) Pulpit Exchange w/ Ali Tote Youth 7pm	Pastor's Day off	Office hr 9am-12pm Devo & Weekly planning 10-11 Evangelism Meeting 7pm	Office hr 9am-12pm Choir 7-8pm Band 8pm Visioning Meeting 8pm	Office hr 9am-12pm	Office hr 9am-12pm Leblanc/Dewarts Wedding Rehearsal	Leblanc/Dewarts Wedding 2pm
9	10	11	12	13	14	15
Worship 9:45 & 11:15 Newton Baptism @ 9:45	Pastor's Day off	Office hr 9am-12pm Devo & Weekly planning 10-11 CMT Meeting 6pm	Office hr 9am-12pm Choir 7-8pm	Office hr 9am-12pm	Office hr 9am-12pm LCBI Homecoming 100th Anniversary	
16	17	18	19	20	21	22
Worship 9:45 & 11:15 (Sunday School @ 9:45) Confirmation Youth 7pm	Pastor's Day off	Office hr 9am-12pm Devo & Weekly planning 10-11 Stewardship/Property Management 7pm	Office hr 9am-12pm Choir 7-8pm Worship Committee Meeting 8:00	Office hr 9am-12pm Ladies' Bible Study @ Irene Cannam's 7:30pm	Office hr 9am-12pm Men's Retreat begins	
23	24	25	26	27	28	29
Worship 9:45 & 11:15 (Sunday School @ 9:45) Youth 7pm Men's Retreat finishes Jazz Worship @ Augustana 7:30pm	Pastor's Day off	Office hr 9am-12pm Devotion and weekly planning 10-11	Office hr 9am-12pm Choir 7-8pm Band 8pm	Office hr 9am-12pm	Office hr 9am-12pm	
30	31	Nov. 1				
Worship 9:45 & 11:15 (Sunday School @ 9:45) Reformation Sunday Kinasao Day Stewardship Fundraiser		Office hr 9am-12pm Devotion and weekly planning 10-11 Native Ministry @ Redeemer				

